

LAWNSWOOD FENCING Ltd.

41 Park Lane, Halesowen, West Midlands B63 2QY

Tel: 01384 634082 Fax: 01384 561085



RETAIL PRICE LIST NOVEMBER 2023 –INCLUDING VAT

PRICES SUBJECT TO CHANGE WITHOUT NOTICE—CORRECT AT TIME OF PRINT

HEAVY-DUTY PINELAP (Imperial 72" wide)

(3 Battens in the centre both sides) **NEW LOWER PRICE**



6ft High PLP66 £29.99

5ft High PLP65 £26.99

4ft High PLP64 £23.99

3ft High PLP63 £20.99

2ft High PLP62 £16.99

Heavy duty lap panel framed both sides with capping rail to top DIPPED GOLDEN BROWN. Anti-rattle & H-Clips recommended.

Matching gate available. **Can be made to size.**

BUDGET LAP (Imperial 72" wide)

(2 Battens in the centre both sides) **NEW LOWER PRICE**



6ft High BLP66 £26.49

5ft High BLP65 £23.99

4ft High BLP64 £21.59

3ft High BLP63 £19.19

Economy lap panel (Brown finish) Galvanised nails.

Please note: sourced from multiple

supplies—design may vary.

No special widths available as not made size.

Anti-rattle & H-Clips recommended.

PREMIUM TUFFLAP *(Imperial 72" wide)

Contemporary panel—**Our heaviest duty lap panel**

NEW LOWER PRICE



6ft High TLP66 £47.99

5ft High TLP65 £44.99

4ft High TLP64 £41.99

3ft High TLP63 £38.99

2ft High TLP62 £32.99

Framed all round with capping rail to top. Looks same from both sides.

PRESSURE TREATED LIGHT GREEN. Stainless-steel nails. H-Clips recommended. **Can be made to size.**

At Lawnswood Fencing Ltd we also offer a large range of timber gates, pergolas, arches, arbours, timber gate furniture, European decorative panels and trellis. **Please ask our sales staff for separate brochure and pricelist.**



STANDARD CLOSEBOARD - PRESSURE TREATED LIGHT GREEN(imperial 72" wide)

Constructed with 14mm tapered featheredge boards and galvanised nails. **NEW LOWER PRICE**



6ft High BCBG66 £38.99

5ft High BCBG65 £33.99

4ft High BCBG64 £28.99

3ft High BCBG63 £21.99

2ft High BCBG62 £18.99

(2ft panels to order only)

Featheredge panel made on 3" x 1 1/4" backing rails with 56mm capping rail to top. Pressure treated light green. Panels are boarded from right to left as standard. H-clips recommended. **Can be made to size. Matching gate available.**

PREMIUM CLOSEBOARD -PRESSURE TREATED BROWN (imperial 72" wide)

Constructed with 14mm tapered featheredge boards and stainless steel nails **NEW LOWER PRICE**



6ft High CBPB66 £43.99

5ft High CBPB65 £38.99

4ft High CBPB64 £31.99

3ft High CBPB63 £26.99

2ft High CBPB62 £21.99

Heavy duty featheredge panel made on 3" x 1 1/4" backing rails with 56mm capping rail to top. Re-dipped Golden Brown. Panels are boarded from right to left as standard. H-Clips recommended. **Can be made to size. Matching gate available.**

PREMIUM BOWED & SCALLOPED CLOSEBOARD PANELS *(Imperial 72" wide)

Constructed with 14mm tapered featheredge boards and stainless steel nails **NEW LOWER PRICE**



BOW BROWN

6ft H BTCBB66 £53.99

5ft H BTCBB65 £48.99

4ft H BTCBB64 £41.99

3ft H BTCBB63 £36.99

2ft H BTCBB62 £31.99

SCALLOP BROWN

STCBB66 £52.99

STCBB65 £47.99

STCBB64 £40.99

STCBB63 £35.99

STCBB62 £30.99



Construction and treatment the same as the flat top panels. **Capping rail available to purchase separately** (see price list for details). Heights listed are to the shoulder, plus or minus a 6" bow or scallop.

PRESSURE TREATED BROWN. Panels are boarded from right to left as standard.

Tanalised green pressure treated bowed/scalloped panels made with galvanised nails, same price as brown treated. **Made to order only. Can be made to size. Matching gates available.**

PREMIUM FLAT TOP ISOBEL (Imperial 72" WIDE) *Our strongest panel.

NEW LOWER PRICE

Designed for exposed or heavy duty applications.



6ft High	FTBEL66	£99.99
5ft High	FTBEL65	£99.99
4ft High	FTBEL64	£79.99
3ft High	FTBEL63	£51.99
2ft High	FTBEL62	£49.99

Constructed on 3" x 1 1/4" cross rails and clad with 4" x 5/8" boards and 56mm capping's to front. Capping rail to top. Pressure treated brown and re-dipped Golden Brown. Heavy to handle!!

Gates available to match.

*** Made to order only.**

PREMIUM BOW TOP ISOBEL (Imperial 72" WIDE) *Our strongest panel

Construction and treatment same as flat top panels.

Designed for exposed or heavy duty applications.

NEW LOWER PRICE

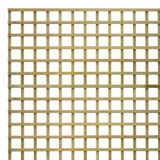


5ft 6" High	BTBEL66	£119.99
5ft High	BTBEL65	£119.99
4ft High	BTBEL64	£99.99
3ft High	BTBEL63	£99.99
2ft High	BTBEL62	£69.99

Capping included. Heights listed are to the shoulder, plus a 6" bow. Maximum height restricted to 6ft overall. **Gates available to match * Made to order only.**

SQUARE TRELLIS (SAWN FINISH) PRESSURE TREATED GREEN (Imperial 72" wide) _NEW LOWER PRICE

*** BOWED TOP/SCALLOPED TOP MADE TO ORDER .**



	<u>FLAT TOP</u>	<u>BOWED TOP *</u>	<u>SCALLOPED TOP</u>
6ft High	FST66 £29.99	BST66 £43.99	SST66 £42.99
5ft High	FST65 £27.99	BST65 £41.99	SST65 £40.99
4ft High	FST64 £24.99	BST64 £38.99	SST64 £37.99
3ft High	FST63 £19.99	BST63 £32.99	SST63 £31.99
2ft High	FST62 £12.99	BST62 £22.99	SST62 £21.99
1ft High	FST61 £9.99	BST61 £19.99	SST61 £19.49

Heavy duty sawn finish. Constructed with 1 1/2" x 3/4" battens with approximately 5 1/4" squares. Stainless steel nails. Heights listed for shaped top trellis are to the shoulder plus or minus a 6" bow or scallop. **PRESSURE TREATED LIGHT GREEN FINISH. Can be made to measure. Trellis can be re-dipped golden brown—To order—Price on application**

6ft x 1ft square trellis, tanatone brown pressure treated:	FLAT TOP	PTST61	£11.49
	BOWED TOP	BPTST61	£21.99
NEW 6ft x 1ft square trellis dipped golden brown	FLAT TOP	FSTD61	£10.49

<u>FAN TRELLIS</u>	Pressure treated light green. * 22" fan only available as tanatone brown pressure treated.			
New 22" Short *	FAN22 £5.99	40" Royal	FANRY40 £24.99	Ideal as a frame for climbers etc.
30" Standard	FAN30 £10.99	60" Deluxe	FANRY60 £84.00	
40" Standard	FAN40 £12.99			

Constructed with 1 1/2" x 3/4" battens. Stainless-steel nails. Royal & Deluxe trellis capped across top.

PREMIUM PALISADE / PICKET PANELS (Imperial 72" WIDE)

NEW LOWER PRICE

Castle pointed or rounded top:





4ft High	Rounded top	PPALRT64	£31.99	Pointed top	PPALPT64	£31.99
3ft High	Rounded top	PPALRT63	£26.99	Pointed top	PPALPT63	£26.99
2ft High	Rounded top	PPALRT62	£24.99	Pointed top	PPALPT62	£24.99

Constructed on two horizontal cross rails. 6ft x 3" x 1 1/4" (1.83m x 70mm x 30mm), clad with vertical pales 3" x 3/4" (70mm x 20mm). Approximate 2" (50mm) gaps between uprights. Stainless-steel nails. Tanalised green pressure treated. **Matching gates available.**



CONCRETE SLOTTED POSTS

ALL PALLETS SUPPLIED WILL BE CHARGED AT £10.00 + VAT—FULLY REFUNDABLE ONCE RETURNED IN GOOD ORDER WITH ORIGINAL RECEIPT.

End Profile	STANDARD 5" x 4" MITRED TOP	END POST SINGLE GROOVE	CORNER POST 90 ° TURN	3 WAY T-POST
				
11FT 10"	HP5412 £53.99	N/A	N/A	N/A
10FT 10"	HP5411 £43.20	N/A	HPC11(To order only) £78.00	N/A
9FT 10"	HP5410 £31.80	HPE10 (To order only) £38.40	HPC10 £50.40	HP3W10 £60.00
8FT 10"	HP549 £22.99	HPE9 £25.20	HPC9 £36.00	HP3W9 £44.40
7FT 10"	HP548 £17.99	HPE8 £21.00	HPC8 £31.20	HP3W8 £37.20
6FT 10"	HP547 £17.49	N/A	HPC7 £30.00	N/A
5FT 10"	HP546 £16.99	HPE6 £19.20	HPC6 £28.80	HP3W6 £34.80
5ft	HP54476 £16.49	N/A	HPC46 £27.60	N/A

BUDGET SLOTTED H-POSTS—8FT ONLY (ALL OTHER SIZES REVERT TO 5" X 4")

BUDGET 4" X 4" STANDARD H-POST

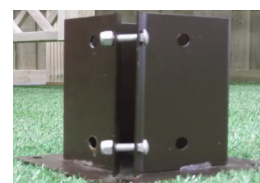
7FT 10" HP448 £16.99

IMPORTANT :ALL CONCRETE POST LENGTHS ARE THE METRIC EQUIVALENT POINT TO POINT.
We recommend the next length of post on all steps above 4"/100mm or into soft ground.

PLEASE NOTE—CONCRETE POSTS & GRAVEL-BOARDS CAN HAVE SMALL HAIRLINE CRACKS ON THE SURFACE. THIS IN NO WAY AFFECTS THE STRENGTH OR DURABILITY OF THE PRODUCT. CONCRETE POSTS & GRAVEL-BOARDS ARE REINFORCED SO THEREFORE ANY HAIRLINE CRACKS WILL NOT AFFECT LONGEVITY IN ANY WAY.

METAL SOCKETS (BROWN POWDER COATED FINISH)

Drive-In (24" long)	2 3/4" x 2 3/4" (For timber archways)	MPG234	£12.99
Drive-In (24" long)	for 3" x 3" posts	MP3324	£10.99
Drive-In (24" long)	for 3 1/2 post galv	MPKDM24	£16.99
Drive-In (30" long)	for 4" x 4" posts	MP4430	£13.99
Bolt-Down	for 3" x 3" posts	MP33BD	£9.99
Bolt-down	for 3 1/2 posts galv	MPKDMBD	£15.99
Bolt-Down	for 4" x 4" posts	MP44BD	£12.99
Repair (8" long)	for 3" x 3" posts	MP33R	£9.99
Repair (8" long)	for 4" x 4" posts	MP44R	£12.99
Concrete in (8" long)	for 3" x 3" posts	MP33C	£10.99
Concrete in (8" long)	for 4" x 4" posts	MP44C	£13.99
Drive in tool	for 3" x 3" posts	DIT3	£10.99
Drive in tool	for 4" x 4" posts	DIT4	£14.99
Legged	for 3" x 3" posts	MP33W	£12.99



CUTTING SERVICE FOR CONCRETE POSTS & GRAVEL BOARDS *

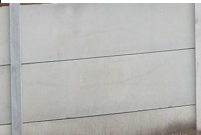
We offer a service to cut concrete posts and gravel boards to size if required. We advise allowing a minimum of 24 to 48 hours notice and require full payment upon ordering. *** To order only, allow 3 to 10 days**
All recommended gravel board are cut 8mm / 1/4" shorter than the gap. Only available on products purchased from Lawnswood Fencing.

Posts SHPCUT £7.20

Gravel Boards GBCUT £10.80

CONCRETE GRAVEL BOARDS

Please note all gravel boards are approx. 1/4"/8mm shorter than 6ft wide to allow to slide in. Use a marker stick if panels are to be fitted afterwards.



Plain Faced
6ft W x 11 1/2" H PGB12 £14.40
6ft W x 6" H PGB6 £13.80



Bold Rock Faced
6ft W x 11 1/2" H RFGB12 £15.00
6ft W x 6" H RFGB6 £14.40



Smooth Rock Faced
6ft W x 11 1/2" H SRFG12 £18.00



Gravel Board for Recessed Posts *
3m x 6" RECGB6 £24.00
2.4m x 8" RECGB8 £20.00

*** To order only—please allow for extended lead-times.**

CUTTING SERVICE AVAILABLE TO ORDER—SEE ABOVE

PLEASE NOTE—CONCRETE POSTS & GRAVEL-BOARDS CAN HAVE SMALL HAIRLINE CRACKS ON THE SURFACE. THIS IN NO WAY AFFECTS THE STRENGTH OR DURABILITY OF THE PRODUCT. CONCRETE POSTS & GRAVEL-BOARDS ARE REINFORCED SO THEREFORE ANY HAIRLINE CRACKS WILL NOT AFFECT LONGEVITY IN ANY WAY.

CONCRETE RECESSED POSTS



With recessed notches and pre-drilled holes for bolting timber rails to for building featheredge fencing.

8ft 3" (for 6ft H fence) RECP83 £24.00

Universal / Lightweight Posts

Concrete post 105 x 105mm x 2.4 m plug holed
wet cast / smooth finish
not recessed—10 bolt holes

8ft universal /lightweight RECP8B £21.60

*5ft 9" (for 4ft H fence) RECP59 POA

*4ft 9" (for 3ft H fence) RECP49 £POA

*** To order only**

**ALL PALLETS SUPPLIED WILL BE CHARGED AT £10.00 + VAT
FULLY REFUNDABLE ONCE RETURNED IN GOOD ORDER WITH ORIGINAL RECEIPT.**

ROOFING BOLTS (includes nut & washer)

Full boxes of 100 less 25%



8mm	40	80	140	160
	RB358	RB808	RB1208	RB1658
	£0.54	£0.66	£0.78	£0.96
	180	200	240	
	RB1808	RB2008	RB2408	
	£1.08	£1.14	£1.20	

1 metre m8 all thread with 6 nuts and washers £3.60

For use with concrete recessed posts and bolting timber posts to concrete posts for hanging gates etc.

CONCRETE GODFATHER POSTS

With pre-drilled holes to bolt to timber posts to act as a repair.



3ft 6" x 3" x 3"	GF36	£13.80
4ft x 4" x 3"	GF443	£15.00
4ft 6" x 4" x 4"	GF46	£17.40
6ft x 4" x 4"	GF60	£20.40

**ALL PALLETS SUPPLIED WILL BE CHARGED AT £10.00 + VAT
FULLY REFUNDABLE ONCE RETURNED IN GOOD ORDER WITH ORIGINAL RECEIPT.**

COACH SCREWS (for use with Godfathers)

Full boxes less 25%

5" (For 3" god-fathers) CS5 £1.02

6" (For 4" god-fathers) CS6 £1.08

TIMBER POSTS (PRESSURE TREATED BROWN OR GREEN AS SPECIFIED)

All sizes quoted are supplied as metric equivalents. **New lower prices**

	12ft	10ft	9ft	8ft	6ft	5ft
3" x 3" Brown		N/A	TP339B £11.25	TP338B £9.99	TP336B £7.49	TP335B £6.25
3" x 3" Green		N/A	N/A	TP338G £9.99	TP336G £7.49	N/A
4" x 3" Brown		TP4310B £14.99	TP439B £13.49	TP438B £11.99	TP436B £8.99	N/A
4" x 3" Green		N/A	TP439G £13.49	N/A	N/A	N/A
4" x 4" Brown	TP4412B £24.99	TP4410B £20.99		TP448B £16.99	TP446B £12.75	N/A
4" x 4" Green		TP4410G £20.99	N/A	TP448G £16.99	N/A	N/A
6" x 6" Green (mitred top)		TP6610MTG £44.99	N/A	N/A	N/A	N/A
5" x 3" Green		N/A	N/A	N/A	TP536G £9.99	N/A
5" x 3" Brown (Notched & Weathered)	N/A		TP539NWB £18.00	TP538NWB £14.40	N/A	N/A
KDM 3 1/2" Green (rounded top, planed & pin grooved)			P100-2.7* £22.99	P100-2.4* £19.99	P100-1.8* £16.99	

*** 10 year guarantee on KDM timber posts—see KDM brochure for details.**

KDM 3 1/2" Green

(rounded top & planed smooth)

SP100-2.4 £19.99

POST CAPS (PRESSURE TREATED BROWN OR GREEN)

4" x 4" (for 3" x 3" posts) Brown	PC44B £1.92	Green	PC44G £1.92
5" x 5" (for 4" x 4" posts) Brown	PC55B £3.12	Green	PC55G £3.12
5" x 4" (for 4" x 3" posts) Brown	PC54B £2.88	Green	PC54G £2.88
4" Acorn or Ball Cap	Green & Planed finish APCG / BPCG £4.80		

TIMBER DUMMY BLOCKS 16" X 32" ROUNDED END

Rounded 4" (100mm) wide dummy blocks

16" tanalised green	DBG16 £2.40	32" tanalised green	DBG32 £3.60
16" tanatone brown	DBB16 £2.40	32" tanatone brown	DBB32 £3.60



PANEL CAPPING RAILS (PRESSURE TREATED BROWN OR GREEN)

6ft x 1 3/4" (45mm) Green (as used on pinelap & budget lap panels)	PCR45G £3.00
6ft x 1 3/4" (45mm) Golden Brown	PCR45D £3.24
6ft x 2 1/4" (56mm) Green (as used on standard tanalised green closeboard panels)	PCR56G £3.24
6ft x 2 1/4" (56mm) Tanatone Brown (as used on premium brown closeboard panels)	PCR56B £3.48
8ft (2.4m) x 2 1/4" (56mm) Tanatone Brown	PCR568B £6.00
8ft (2.4m) x 2 1/4" (56mm) Tanalised Green } ideally for oversized panels or if the concrete posts have spread	PCR568G £6.00
Rebated Capping 3m Brown (for assemble on site featheredge fencing)	RCR10B £10.50
Bowed Top Panel Capping Brown (for premium bowed top panels)	BTCR8B £2.64
*Extra wide capping (double clad closeboard panels) 1.828 x 80mm x 16mm	EWC6B £8.16 (To order only)
7ft x 2 3/4" x 3/4" (2.1m x 70 x 18mm) planed smooth green treated	PCR7G £6.00
KDM Grooved capping 1.8m x 30mm x 66mm tanalised green	CAP5G £6.00

FEATHEREDGE BOARDS (PRESSURE TREATED TANATONE BROWN)

Approximately 14mm tapered to 5mm, 5" wide. Average coverage 3 boards to the foot / 10 boards per metre.

	10ft	8ft	7ft	6ft	5ft 6"	5ft	4ft	3ft	2ft
BROWN	FEBPT10	FEBPT8	FEBPT7	FEBPT6	FEBPT56	FEBPT5	FEBPT4	FEBPT3	FEBPT2
	£2.65	£1.85	£1.60	£1.36	£1.25	£1.15	£0.92	£0.69	£0.47

FEATHEREDGE BOARDS (PRESSURE TREATED TANALISED LIGHT GREEN)

Approximately 14mm tapered to 5mm, 5" wide. Average coverage 3 boards to the foot / 10 boards per metre.

GREEN	BFEBG8	N/A	BFEBG6	N/A	BFEBG5	BFEBG4	BFEBG3	BFEBG2
	£1.82		£1.34		£1.13	£0.90	£0.67	£0.46

LIMITED SPECIAL WINTER OFFER PRICES**Timber supplied in metric equivalents of the imperial sizes stated. Please check at time of ordering.****TIMBER RAILS (PRESSURE TREATED BROWN OR GREEN) New lower prices**

	16ft	12ft	10ft	9ft	8ft	6ft	
Arris Rail (Triangular) Sawn Finish Brown		N/A	N/A	AR10 £4.99	AR9 £4.44	AR8 £3.96	N/A
Premium Canted Rail (Sloping Top) Sawn Finish Brown 4"x 2"		N/A	N/A	CR10 £7.20	N/A	CR8 £5.76	N/A
Budget Canted rail (Sloping Top) Sawn finish brown 3" x 2"		N/A	N/A	BCR10 £6.00	N/A	N/A	N/A
4" x 2" Planed finish brown CLS stamped Easi-edge		N/A	UC44212 £11.99	TR4210B £7.99	N/A	TR428B £6.49	N/A
4" x 2" Planed finish green CLS stamped Easi-edge		TR4216G £12.99	N/A	N/A	N/A	N/A	N/A
3" x 2" Planed finish brown CLS stamped Easi-edge		N/A	N/A	TR3210B £6.00	N/A	TR328B £4.80	N/A
3" x 2" Planed finish green CLS stamped Easi-edge		N/A	TR3212G £7.50	N/A	N/A	N/A	N/A
3" x 1 1/4" * Sawn Finish Brown		N/A	N/A	N/A	N/A	TR3148B £3.99	TR3146B £3.00
3" x 1 1/4" * Sawn Finish Green		N/A	N/A	N/A	N/A	TR3148G £3.99	TR3146G £3.00
3" x 1 1/4" rails are used on our closeboard panels							
3" x 1 1/4" planed smooth CLS unstamped timber rails, tanalised green (6ft) (as used in our planed palisade panels)						PTR3146G £4.80	

LOG ROLL EDGING (PRESSURE TREATED GREEN) 1.8m ROLLS x 70mm DIAMETER, HALF ROUND**SPECIAL OFFER PRICE WHILE STOCKS LAST - No further discount applicable**

6" High (150mm)	LR150	£6.00
9" High (225mm)	LR225	£9.00
12" High (300mm)	LR300	£10.80

Timber pointed site pegs/stakes		
18" x 2" x 2" pointed timber peg (48mm x 48mm x 450mm)	PEG450	£0.99
24" x 2" x 2" pointed timber peg (48mm x 48mm x 600mm)	PEG600	£1.08



GENERAL TIMBER PRESSURE TREATED BROWN OR GREEN)

	16ft	10ft	9ft	8ft	6ft	5ft	4ft	3ft
<u>PANEL REPAIRS</u>								
1 1/2" x 3/4" Battens Treated Green	N/A	N/A	N/A	ST1128G £3.60	ST1126G £2.40	ST1125G £2.16	ST1124G £1.80	N/A

GENERAL SAWN TIMBER

4" x 5/8" Treated Green	N/A	N/A	N/A	ST4588G £3.00	N/A	N/A	N/A	N/A
4" x 5/8" Treated Brown	N/A	N/A	N/A	N/A	ST4586B £2.28	N/A	ST4584B £1.50	ST4583B £1.20
3" x 7/8" Treated Brown	N/A	N/A	N/A	N/A	ST3786B £2.28	N/A	N/A	ST3783B £1.20
4" x 7/8" Treated Green	N/A	ST47810G £4.80	N/A	ST4788G £3.84	N/A	N/A	N/A	N/A
4" x 7/8" Treated Brown	N/A	ST47810B £4.80	N/A	ST4788B £3.84	ST4786B £2.94	N/A	N/A	N/A

PANEL REPAIRS

Waney Slats * Dipped to order	N/A	N/A	N/A	N/A	WESD £1.80	N/A	N/A	N/A
Tufflap Slats 75 x 7mm Treated Green	N/A	N/A	N/A	N/A	TLS £2.16	N/A	N/A	N/A

KDM European panels: Repair kit framing RK-SGF £6.00
See KDM brochure page 29 Repair kit slats RK-slats £3.00

Timber supplied in metric equivalents of the imperial sizes stated. Please check at time of ordering.

TIMBER GRAVEL-BOARD

6" x 2" Treated Brown	UC46216 £23.99	ST6210B £14.40	N/A	N/A	N/A	N/A	N/A	N/A
6" x 7/8" Treated Green	N/A	ST67810G £6.99	N/A	ST6788G £5.59	N/A	N/A	N/A	N/A
6" x 7/8" Treated Brown	N/A	ST67810B £6.99	ST6789B £6.29	ST6788B £5.59	ST6786B £4.25	N/A	N/A	N/A

KDM planed pine gravelboard

50mm x 150mm x 1.8m (planed all round 45mm x 145mm) GB18 £9.99

ALTERNATIVE FOR RAISED BEDS ETC

16ft x 8"x2" Easi-edge with 4 rounded edges corners (metric 16ft) EAS18G £29.99

TIMBER RAILWAY SLEEPERS (SOFTWOOD & PRESSURE TREATED GREEN)

8ft x 10" x 5" (2.4m x 250mm x 125mm) (single sleeper) (sawn finish) SLEEPBIG £29.99

8ft x 7 3/4" x 3 3/4" (2.4m x 190mm x 90mm) (single sleeper) planed smooth PS9019024 £27.75

Cutting service available for sleepers

Price to cross-cut sleepers to length SLEEPCC £7.20
Price to cut sleepers lengthways SLEEPCL £9.60

Excludes re-treat end grain stain on cut edge. Recommended prior to fitting

TIMBER DECKING & HANDRAIL (PRESSURE TREATED GREEN)

4.8m x 122mm x 28mm Deck Board (16ft) single length	DECK16	£15.95
3.6m x 122mm x 28mm Deck Board (12ft) single length	DECK12	£11.99
Spindles 3ft x 1 1/4" x 1 1/4" (900mm) Planed with 4 rounded corners	SPIN90	£2.22
Hand Rail 7ft x 4" x 1 1/8" Planed Redwood	PTR7G	£9.00
Capping Rail 7ft x 2 3/4" x 3/4" Planed with 2 rounded edges	PCR7G	£6.00
Deck screws (green) 45mm x 60 mm Box of 200	601245-045GN17	£7.99
45mm x 60mm Tub of 800	6012T45-060GN17	£30.99

NEW FOR 2023—HUNTER COMPOSITE DECKING

DECKING BOARDS

136mm x 25mm x 3.6m Deck Board (12ft) single length	Anthracite	PIRHUDBL	£24.99
136mm x 25mm x 3.6m Deck board (12ft) single length	Mid Grey	PIRHUDGY	£24.99
Fascia board 150mm x 10mm x 3.6m (12ft) single length	Anthracite	PIRHUEFBBL	£25.99
Fascia board 150mm x 10mm x 3.6m (12ft) single length	Mid Grey	PIRHUEFBGY	£25.99

DECKING JOISTS

100mm x 47mm x 3.6m (12ft) timber joist (UC4)	UC44212	£11.99
150mm x 47mm x 4.8m (16ft) timber joist (UC4)	UC46216	£23.99

POSTS

KDM 3 1/2" Green	P100-2.7*	P100-2.4*	P100-1.8*
(rounded top, planed & pin grooved)	£22.99	£19.99	£16.99
KDM 3 1/2" Green			
(rounded top & planed smooth)	SP100-2.4	£19.99	

*** 10 year guarantee on KDM timber posts—see KDM brochure for details.**

FIXING CLIPS

Stainless-steel & black plated fixing clips with screw 100 per box (recommended 300mm centres/13 clips per board/per side)	PIRFUDMCSCR	£44.99
Stainless-steel & black plated started clips with screw 25 per box	PIRFUDSTCSCR	£14.99

SCREWS

Stainless steel coloured screws to fix fascia boards		
Black Carbon 25 per box	PIRSGSCRBB	£14.99
Antique Grey 25 per box	PIRSGSCRAG	£14.99

**SEE ALSO OUR COMPOSITE
DECKING BROCHURE/
INSTALLATION GUIDE.**

PLANED TIMBER (PRESSURE TREATED GREEN)

16ft x 8" x 2" Easi-edge with four rounded edges (metric 16ft)	ESAI18G	£29.99
*Rounded/Pointed Top Pales 900mm x 70mm x 19mm (3ft)	PB900RND	£1.20
*Rounded/Pointed Top Pales 1.2m x 70mm x 19mm (4ft)	PB1200RND	£1.62
*3" x 1 1/4" planed smooth CIS unstamped timber rails, tanalised green (6ft)	PTR3146G	£4.80
* As used in our planed palisade panels.		
Matchboard (tongue & groove) 2m x 122mm x 18mm 5th Redwood	PTMB66G	£7.20
New Loglap (tongue & groove) 2.4m x 105mm x 7mm tanalised green	PTLLAP	£6.60
See page 6 for rails and joists C16 finish also see page 5 for our range of KDM rounded top & pin grooved posts		

PACKING STRIPS (DIPPED GOLDEN BROWN) * TO ORDER ONLY

For use where the gap between existing concrete slotted posts has spread. We strongly advise securing the packing pieces to the panel frame. Please be aware of extended lead-times on bespoke cut items

1.8m x 50mm x 5mm PEKA	£0.72	1.8m x 50mm tapering from 15mm to 0 PEKE	£5.40
1.8m x 50mm x 16mm PEKB	£2.70	1.8m x 50mm tapering from 25mm to 0 PEKF	£6.00
1.8m x 50mm x 32mm PEKC	£3.30	1.8m x 50mm tapering from 30mm to 0 PEKG	£6.60
1.8m x 50mm x 50mm PEKD	£4.08	1.8m x 50mm tapering from 50mm to 0 PEKH	£7.80

PANEL EXTENSION KITS (PLANED & PRESSURE TREATED GREEN)

1.8m x 44mm x 14mm (Price each to extend metric width panels to 72" imperial)	2 required per panel)
	PEK £1.50

PANEL REPAIRS—Ideal for filling gaps when sliding in new panels to the existing concrete posts. We advise screwing packing strips properly to the new panels. Also see our laths and slats for repairs on page 7.

AGGREGATES

Sand & Gravel (20mm ballast)	40kg Bag	BAL40	£3.55
Pallet price(40 bags per pallet)		BALP40	£124.44
(works out to £3.18 per bag)			
£10.00 deposit applies to pallets (refundable on return)			

Sand & Gravel (20mm ballast)	Bulk Bag (750kg)	BALBB	£50.40
Concreting/Sharp Sand	40kg Bag	CONC40	£4.80
Building Sand	40kg Bag	BS40	£4.80
Cement	25kg Bag	OPC	£9.60
Post Fix (in plastic bag)	20kg Bag	PF20	£5.00 - <u>SPECIAL OFFER PRICE !</u>
Patch Tarmac	25kg Bag	PTM20	£12.00



ALL PALLETS SUPPLIED WILL BE CHARGED AT £10.00 + VAT—FULLY REFUNDABLE ONCE RETURNED IN GOOD ORDER WITH ORIGINAL RECEIPT.

LANDSCAPE FABRIC / WEEDBARRIER

Special offer while stocks last

Weedbarrier 50GSM 1m x 10m	WEEDBARRIERPROMO	£8.40
----------------------------	------------------	-------

PRESERVATIVES (SPIRIT BASED BARRETTINE 5 LITRE) £28.80

Clear	WPCL005	Red Cedar	WPRC005	Light Brown	WPLB005
Dark Brown	WPDB005	Holly Green	WPHG005	Golden Brown	WPGB005
Summer Tan	WPST005	Black	WPB005		

Sample bottles of the coloured stain are available, great to try a small area before you commit to a colour please ask for details. £3.00

<u>CREOCOTE PRESERVATIVE (4 LITRE)</u>	Dark	CRCOD004	Light	CRCOL004
		£14.49		£14.49

TRIP RAIL / KNEE RAIL FENCING (for use with 3" x 3" or 4" x 4" sawn posts)

4ft x 4" x 4" vee'd top post	TRP44L	£9.99 - New lower price
3" Galvanised Strap	TRS3	£2.04
4" Galvanised Strap	TRS4	£2.22



GALVANISED ROUND WIRE NAILS

1/2 KG BAG

1KG BAG

2 1/2 KG TUB

40MM (1 1/2")	RWG40H £4.20	N/A	RWG40T £15.00
50MM (2")	RWG50H £4.20	N/A	RWG50T £15.00
65MM (2 1/2")	RWG65H £4.20	N/A	N/A
75MM (3")	RWG75H £4.20	N/A	RWG75T £15.00
100MM (4")	RWG100H £4.20	N/A	RWG100T £15.00
125MM (5")	N/A	RWG125 £6.18	N/A
150MM (6")	N/A	RWG150 £6.18	N/A

SHERADIZED ANGULAR SHANK NAILS (recommended for attaching featheredge boards)

40MM (1 1/2")	1/2KG BAG	SAS40H £5.16	2 1/2KG TUB	SAS540T £18.60
50MM (2")	1/2KG BAG	SAS50H £5.16	2 1/2 KG TUB	SAS50T £18.60

PERRY PRO WOODSCREWS **POZI HEAD—YELLOW PASSIVATED**

4mm x 25mm Box 200	6093040-025YP	£2.99
4mm x 30mm Box 200	6093040-030YP	£3.49
4mm x 40mm Box 200	6093040-040YP	£3.99
5mm x 40mm Box 200	6093050-040YP	£5.99
5mm x 50mm Box 200	6093050-050YP	£6.49
5mm x 70mm Box 200	6093050-070YP	£8.99
5mm x 80mm Box 200	6093050-080YP	£9.99
5mm x 90mm Box 100	6093050-090YP	£5.99
5mm x 100mm Box 100	6093050-100YP	£6.49
6mm x 100mm Box 100	6093060-100YP	£8.99
1000 case mixed sizes from 15mm-80mm	6093-attache-YP	£23.99

COACH SCREWS (WITH WASHER)

2" CS2 £0.42	FULL BOXES
5" CS5 £1.02	LESS 20%
6" CS6 £1.08	
8" CS8 £1.74	

BIRKDALE ROUND-HEAD POZI SCREWS

4mm x 25mm Box 200	ruspert silver B33400251	£5.99
4mm x 25mm Box 200	ruspert black B33400253	£5.99

PERRY DECKING SCREWS GREEN RUSPERT

45mm x 60mm Box 200	601245-06GN17	£7.99
45mm x 60mm Tub 800	6012T45-060GN17	£30.99

BIRKDALE POZI-HEAD—RUSPERT BLACK

5mm x 30mm Box 200	ruspert black B37500303	£6.99
5mm x 50mm Box 200	ruspert black B37500503	£12.49

PLASTIC NYLON PLUGS

M12 (for use with coach screws)	NP12	£0.30
Rawl Plugs 7mm Brown (per 100)	RP7	£3.60
Rawl Plugs 5.5mm Red (per 100)	RP55	£3.60

FRAME FIXINGS

(nylon sleeved window anchor)

100 x M10	FF4	£0.90
140 x M10	FF5	£1.02
165 x M10	FF6	£1.14

FULL BOXES LESS 20%

THUNDER BOLTS—RECOMMENDED

Self-threading bolts into concrete or brick—No rawl plug

50 x 6mm	TB650	£0.72	
75 x 6mm	TB675	£0.84	
100 x M10	TB100	£1.20	100 x 6mm TB6100 £0.96
130 x M10	TB130	£1.56	130 x 6mm TB6130 £1.08
150 x M10	TB150	£1.80	150 x 6mm TB6150 £1.20

FULL BOXES LESS 20%

TIMBER LOK SCREWS (HEX HEAD) - RECOMMENDED

FULL BOXES LESS 20%

Ideal for fixing Timber Sleepers etc.

10" (240mm) x 6.3mm	TEK10	£0.96	8" (200mm) x 6.3mm	TEK8	£0.72
6" (150mm) x 6.3mm	TEK6	£0.60	4" (90mm) x 6.3mm	TEK4	£0.48

CUP SQUARE BOLTS

70mm x M10 CPS3 £1.20 100 x M10 CPS4 £1.44

EYE BOLTS (includes 2 nuts & washers)

200 x M10 EB10 £2.16

FENCING CLIPS

Anti-Rattle (stainless)	(fits to top of panel to prevent rattling in concrete posts) - Single	SSARC	£0.60
Anti-Rattle (Plastic)	(fits to top of panel to prevent rattling in concrete posts)	ARC	£0.20
H-Clip (Plastic)	(fits over gravel board & to base of panel to prevent bowing)	PHC	£1.80
H-Clip (galvanised)		SHC	£1.92
Anti-Theft (Plastic)	(fits around concrete posts to link panels either side together)	ATS	£0.84
Anti-theft strap (metal)		MATS	£2.40
Met Clip (Metal)	(U-shaped) 45mm	MC45	£0.78
Met Clip (Metal)	(U-shaped) 55mm	MC55	£0.84
Z-Clip (Metal)		MZC	£0.84
L-Clip (Metal)		MLC	£0.84
Gravel Board Clip (Metal) for 2" thick timber or concrete gravel-boards 9" long	BZP	GBB	£3.00
1" Gravel Board Clip for timber gravel-boards		GBT	£2.16
Arris Rail Bracket (Metal)		ARB	£2.64
Easi-fix panel clip (brown powder coated)	52mm	EFC	£1.08
	47mm	EFC47	£1.88

SECURITY/CACTUS STRIP

Brown plastic finish—boxed (4 metres total)

Per box

CACT £10.80

BARBED / RAZOR WIRE

RAZOR WIRE CONCERTINA 450MM HIGH X 10M	RW18	POA
RAZOR WIRE WARNING SIGNS	RWWS	£2.40
CRANKED FACEMOUNTED GALVANISED		
BARBED WIRE / RAZOR WIRE BRACKETS	GBWB	£11.40

**OPENING HOURS****MONDAY TO FRIDAY****Open 8am—4.45pm****SATURDAY****Open 8am—12.15pm****SUNDAY****CLOSED****BANK HOLIDAY MONDAYS****CLOSED****ALL DELIVERIES PRE-PAID, COVID SAFE, KERBSIDE CRANE UNLOAD.****INSTALLATION SERVICE AVAILABLE—PLEASE ASK FOR DETAILS.****SEPARATE PRICE LISTS AVAILABLE FOR THE FOLLOWING PRODUCT RANGES:****GATES, DECORATIVE EUROPEAN PANELS, GARDEN FURNITURE, AROURS, ARCHES, PERGOLAS, DECKING.****BESPOKE MADE ITEMS AVAILABLE—PLEASE ASK FOR DETAILS**